


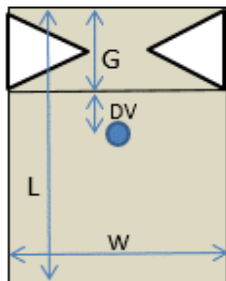
Codice	SRV.3000_PRT	Descrizione	Sacchetto 1kg caffè valvola interna
Capacità	1 kg (3.000 ml)	Proprietà tecniche del film	Saldabilità - ASTM F88-99
Materiale	PET/ALU/PE	Resistenza Saldatura (N/15 mm) >	34
Colore		Temperatura Saldatura °C	170
		Pressione Saldatura Kpa	230
		Tempo Saldatura s	1,5
Valvola	 INTERNA	Barriera	
		Permeabilità Ossigeno <	0,1
		ASTM D3985-95 cc/m ² /24h (23C°-0% r.h.)	
		Permeabilità vapor d'Acqua <	0,1
		ASTM F1249-90 g/m ² /24h (38C°-90% r.h.)	

COMPOSIZIONE

Materiale	Tolleranza : +/- 8mm	
	Spessore (µm)	Grammatura (g/m ²)
 - POLYESTER	12	17
- ALUMINIUM	6,35	17
- POLYETHYLENE	90	83

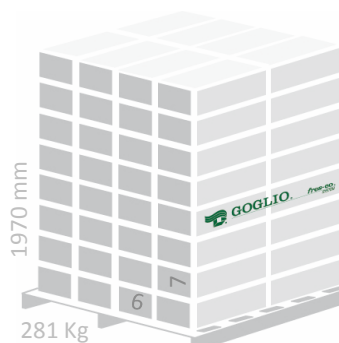
DIMENSIONI (mm)


		Tolleranza
Larghezza fronte (W)	130	
Larghezza soffiutto (G)	75	
Lunghezza (L)	420	
Distanza valvola (DV)	75	+/- 7mm


IMBALLO

Sacchetti/scatola	225
Scatole/pallet	42
Sacchetti/pallet	9.450
Dimensioni scatola (mm)	435x410x260
Dimensioni pallet (mm)	1200x1000
Peso scatola (kg)	6,3

€ 1,97



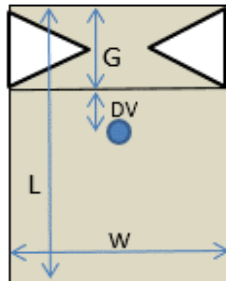
Code	SRV.3000_PRT	Description	Coffee bag 1kg inner valve
Capacity	1 kg (3.000 ml)		
Material	PET/ALU/PE	Film technical properties	
Colour		Seal Strength - ASTM F88-99	
		Seal strength (N/15 mm) >	34
		Seal Temperature °C	170
		Seal Pressure Kpa	230
		Seal Time s	1,5
Valve	 INNER	Barrier	
		Oxygen Permeability <	0,1
		ASTM D3985-95 cc/m ² /24h (23C°-0% r.h.)	
		Moisture Permeability <	0,1
		ASTM F1249-90 g/m ² /24h (38C°-90% r.h.)	

STRUCTURE

Material	Tolerance : +/- 8mm	
	Thickness (µm)	Weight (g/m ²)
 - POLYESTER	12	17
- ALUMINIUM	6,35	17
- POLYETHYLENE	90	83

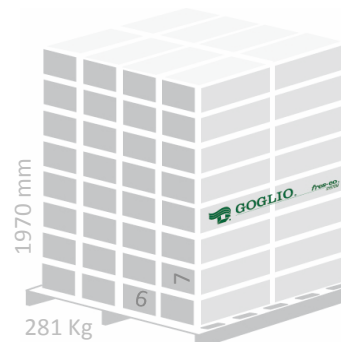
DIMENSIONS (mm)

		Tolerance
Front width (W)	130	
Gusset width (G)	75	
Length (L)	420	
Valve location (DV)	75	+/- 7mm



PACKAGING

Bags per carton	225
Cartons per pallet	42
Bags per pallet	9.450
Carton dimensions (mm)	435x410x260
Pallet dimensions (mm)	1200x1000
Weight per carton (kg)	6,3



€ 1,97