

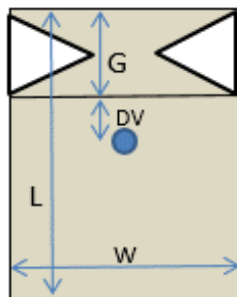
<b>Codice</b>	<b>S5SRV.3001</b>	<b>Descrizione</b>	<b>Sacchetto 1kg caffè valvola interna</b>
<b>Capacità</b>	<b>1 KG (3.200 ml)</b>		
<b>Materiale</b>	<b>PET/ALU/PE</b>	<b>Proprietà tecniche del film</b>	
		<b>Saldabilità - ASTM F88-99</b>	
		Resistenza Saldatura (N/15 mm) >	<b>34</b>
		Temperatura Saldatura °C	<b>170</b>
<b>Colore</b>	<b>NERO OPACO</b>	Pressione Saldatura Kpa	<b>230</b>
		Tempo Saldatura s	<b>1,5</b>
<b>Valvola</b>	<b>INTERNA</b>	<b>Barriera</b>	
		Permeabilità Ossigeno <	<b>0,1</b>
		<b>ASTM D3985-95</b> cc/m <sup>2</sup> /24h (23C°-0% r.h.)	
		Permeabilità vapor d'Acqua <	<b>0,1</b>
		<b>ASTM F1249-90</b> g/m <sup>2</sup> /24h (38C°-90% r.h.)	

**COMPOSIZIONE**

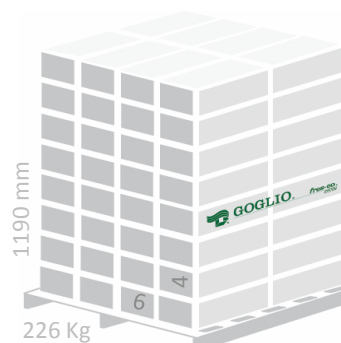
<b>Materiale</b>	Tolleranza : +/- 8mm	
	Spessore (µm)	Grammatura (g/m <sup>2</sup> )
 - POLYESTER	<b>12</b>	<b>17</b>
- ALUMINIUM	<b>6,35</b>	<b>17</b>
- POLYETHYLENE	<b>90</b>	<b>83</b>

**DIMENSIONI (mm)**

		<b>Tolleranza</b>
<b>Larghezza fronte (W)</b>	<b>150</b>	
<b>Larghezza soffiutto (G)</b>	<b>90</b>	
<b>Lunghezza (L)</b>	<b>420</b>	
<b>Distanza valvola (DV)</b>	<b>75</b>	<b>+/- 7mm</b>


**IMBALLO**

<b>Sacchetti/scatola</b>	<b>300</b>
<b>Scatole/pallet</b>	<b>24</b>
<b>Sacchetti/pallet</b>	<b>12.000</b>
<b>Dimensioni scatola (mm)</b>	<b>435x410x260</b>
<b>Dimensioni pallet (mm)</b>	<b>1200x1000</b>
<b>Peso scatola (kg)</b>	<b>8,6</b>



€ 2,86

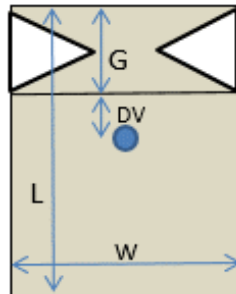
<b>Code</b>	<b>S5SRV.3001</b>	<b>Description</b>	<b>Coffee bag 1kg inner valve</b>
<b>Capacity</b>	<b>1 KG (3.200 ml)</b>		
<b>Material</b>	<b>PET/ALU/PE</b>	<b>Film technical properties</b>	
<b>Colour</b>	<b>BLACK MATT</b>	<b>Seal Strength - ASTM F88-99</b>	
<b>Valve</b>	<b>INNER</b>	Seal strength (N/15 mm) > <b>34</b> Seal Temperature °C <b>170</b> Seal Pressure Kpa <b>230</b> Seal Time s <b>1,5</b>	
		<b>Barrier</b>	
		Oxygen Permeability < <b>0,1</b> <b>ASTM D3985-95</b> cc/m <sup>2</sup> /24h (23C°-0% r.h.) Moisture Permeability < <b>0,1</b> <b>ASTM F1249-90</b> g/m <sup>2</sup> /24h (38C°-90% r.h.)	

### STRUCTURE

<b>Material</b>		Tolerance : +/- 8mm	
		Thickness (µm)	Weight (g/m <sup>2</sup> )
	- POLYESTER	<b>12</b>	<b>17</b>
	- ALUMINIUM	<b>6,35</b>	<b>17</b>
	- POLYETHYLENE	<b>90</b>	<b>83</b>

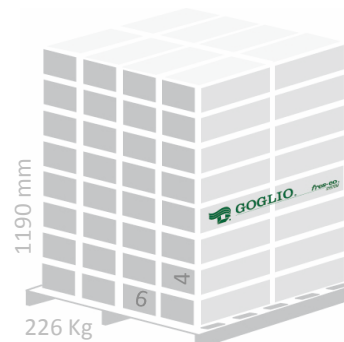
### DIMENSIONS (mm)

<b>Front width (W)</b>	<b>150</b>	<b>Tolerance</b>  <b>+/- 7mm</b>
<b>Gusset width (G)</b>	<b>90</b>	
<b>Length (L)</b>	<b>420</b>	
<b>Valve location (DV)</b>	<b>75</b>	



### PACKAGING

<b>Bags per carton</b>	<b>300</b>
<b>Cartons per pallet</b>	<b>24</b>
<b>Bags per pallet</b>	<b>12.000</b>
<b>Carton dimensions (mm)</b>	<b>435x410x260</b>
<b>Pallet dimensions (mm)</b>	<b>1200x1000</b>
<b>Weight per carton (kg)</b>	<b>8,6</b>



€ 2,86