


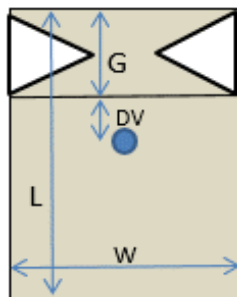
<b>Codice</b>	<b>S5SRV.1002</b>	<b>Descrizione</b>	<b>Sacchetto 250g caffè valvola interna</b>
<b>Capacità</b>	<b>250 g (800 ml)</b>	<b>Proprietà tecniche del film</b>	<b>Saldabilità - ASTM F88-99</b>
<b>Materiale</b>	<b>PET/ALU/PE</b>	Resistenza Saldatura (N/15 mm) >	<b>34</b>
<b>Colore</b>	<b>BIANCO OPACO</b>	Temperatura Saldatura °C	<b>170</b>
<b>Valvola</b>	<b>INTERNA</b>	Pressione Saldatura Kpa	<b>230</b>
		Tempo Saldatura s	<b>1,5</b>
		<b>Barriera</b>	
		Permeabilità Ossigeno <	<b>0,1</b>
		<b>ASTM D3985-95</b> cc/m <sup>2</sup> /24h (23C°-0% r.h.)	
		Permeabilità vapor d'Acqua <	<b>0,1</b>
		<b>ASTM F1249-90</b> g/m <sup>2</sup> /24h (38C°-90% r.h.)	

**COMPOSIZIONE**

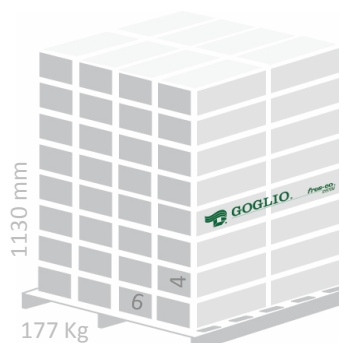
<b>Materiale</b>	Tolleranza : +/- 8mm	
	Spessore (µm)	Grammatura (g/m <sup>2</sup> )
 - POLYESTER	<b>12</b>	<b>17</b>
- ALUMINIUM	<b>6,35</b>	<b>17</b>
- POLYETHYLENE	<b>75</b>	<b>69</b>

**DIMENSIONI (mm)**


		<b>Tolleranza</b>
Larghezza fronte (W)	<b>120</b>	
Larghezza soffiato (G)	<b>80</b>	
Lunghezza (L)	<b>240</b>	
Distanza valvola (DV)	<b>50</b>	<b>+/- 7mm</b>


**IMBALLO**

Sacchetti/scatola	<b>500</b>
Scatole/pallet	<b>24</b>
Sacchetti/pallet	<b>12.000</b>
Dimensioni scatola (mm)	<b>605x315x245</b>
Dimensioni pallet (mm)	<b>1200X1000</b>
Peso scatola (kg)	<b>6,6</b>



€ 2,11

<b>Code</b>	<b>S5SRV.1002</b>	<b>Description</b>	<b>Coffee bag 250g inner valve</b>
<b>Capacity</b>	<b>250 g ( 800 ml )</b>		
<b>Material</b>	<b>PET/ALU/PE</b>	<b>Film technical properties</b>	
		<b>Seal Strength - ASTM F88-99</b>	
		Seal strength (N/15 mm) >	<b>34</b>
		Seal Temperature °C	<b>170</b>
<b>Colour</b>	<b>WHITE MATT</b>	Seal Pressure Kpa	<b>230</b>
		Seal Time s	<b>1,5</b>
<b>Valve</b>	<b>INNER</b>	<b>Barrier</b>	
		Oxygen Permeability <	<b>0,1</b>
		<b>ASTM D3985-95</b> cc/m <sup>2</sup> /24h (23C°-0% r.h.)	
		Moisture Permeability <	<b>0,1</b>
		<b>ASTM F1249-90</b> g/m <sup>2</sup> /24h (38C°-90% r.h.)	

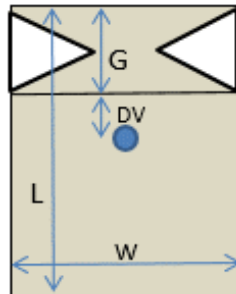
## STRUCTURE

Material	Tolerance : +/- 8mm	
	Thickness (µm)	Weight (g/m <sup>2</sup> )
- POLYESTER	<b>12</b>	<b>17</b>
- ALUMINIUM	<b>6,35</b>	<b>17</b>
- POLYETHYLENE	<b>75</b>	<b>69</b>



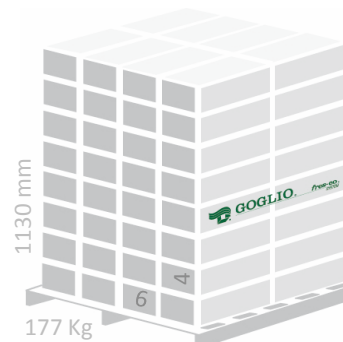
## DIMENSIONS (mm)

		Tolerance
Front width (W)	<b>120</b>	
Gusset width (G)	<b>80</b>	
Length (L)	<b>240</b>	
Valve location (DV)	<b>50</b>	<b>+/- 7mm</b>



## PACKAGING

Bags per carton	<b>500</b>
Cartons per pallet	<b>24</b>
Bags per pallet	<b>12.000</b>
Carton dimensions (mm)	<b>605x315x245</b>
Pallet dimensions (mm)	<b>1200X1000</b>
Weight per carton (kg)	<b>6,6</b>



€ 2,11