


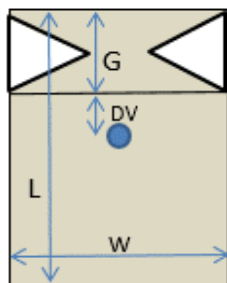
| | | | |
|---|----------------|--|--------------------------------------|
| Codice | SRV.1000_PRT | Descrizione | Sacchetto 250g caffè valvola interna |
| Capacità | 250 g (700 ml) | | |
| Materiale | PET/ALU/PE | Proprietà tecniche del film | |
| Colore | | Saldabilità - ASTM F88-99 | |
| | | Resistenza Saldatura (N/15 mm) > | 32 |
| | | Temperatura Saldatura °C | 170 |
| | | Pressione Saldatura Kpa | 230 |
| | | Tempo Saldatura s | 1,5 |
| Valvola | INTERNA | Barriera | |
|  | | Permeabilità Ossigeno | < 0,1 |
| | | ASTM D3985-95 cc/m ² /24h (23C°-0% r.h.) | |
| | | Permeabilità vapor d'Acqua | < 0,1 |
| | | ASTM F1249-90 g/m ² /24h (38C°-90% r.h.) | |

COMPOSIZIONE

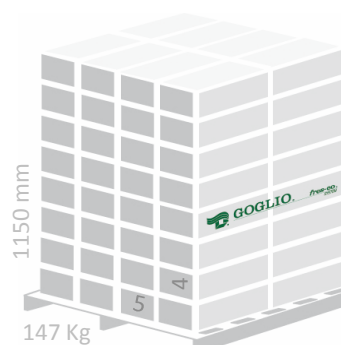
| Materiale | Tolleranza : +/- 8mm | |
|---|----------------------|--------------------------------|
| | Spessore (µm) | Grammatura (g/m ²) |
|  - POLYESTER | 12 | 17 |
| - ALUMINIUM | 6,35 | 17 |
| - POLYETHYLENE | 75 | 69 |

DIMENSIONI (mm)


| | | Tolleranza |
|------------------------|------------|----------------|
| Larghezza fronte (W) | 85 | |
| Larghezza soffiato (G) | 58 | |
| Lunghezza (L) | 240 | |
| Distanza valvola (DV) | 50 | +/- 7mm |


IMBALLO

| | |
|-------------------------|--------------------|
| Sacchetti/scatola | 600 |
| Scatole/pallet | 20 |
| Sacchetti/pallet | 12.000 |
| Dimensioni scatola (mm) | 595x355x250 |
| Dimensioni pallet (mm) | 1200x1000 |
| Peso scatola (kg) | 6,4 |



€ 2,01

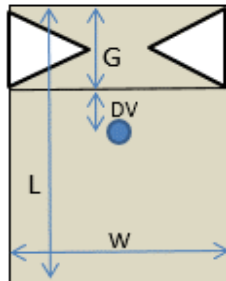
| | | | |
|-----------------|--|--|-----------------------------|
| Code | SRV.1000_PRT | Description | Coffee bag 250g inner valve |
| Capacity | 250 g (700 ml) | | |
| Material | PET/ALU/PE | Film technical properties | |
| Colour | | Seal Strength - ASTM F88-99 | |
| | | Seal strength (N/15 mm) > | 32 |
| | | Seal Temperature °C | 170 |
| | | Seal Pressure Kpa | 230 |
| | | Seal Time s | 1,5 |
| Valve |  INNER | Barrier | |
| | | Oxygen Permeability < | 0,1 |
| | | ASTM D3985-95 cc/m ² /24h (23C°-0% r.h.) | |
| | | Moisture Permeability < | 0,1 |
| | | ASTM F1249-90 g/m ² /24h (38C°-90% r.h.) | |

STRUCTURE

| Material | Tolerance : +/- 8mm | |
|---|---------------------|----------------------------|
| | Thickness (µm) | Weight (g/m ²) |
|  - POLYESTER | 12 | 17 |
| - ALUMINIUM | 6,35 | 17 |
| - POLYETHYLENE | 75 | 69 |

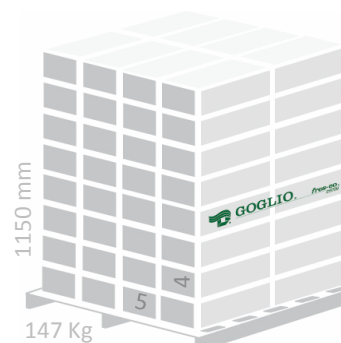
DIMENSIONS (mm)

| | | Tolerance |
|---------------------|------------|----------------|
| Front width (W) | 85 | |
| Gusset width (G) | 58 | |
| Length (L) | 240 | |
| Valve location (DV) | 50 | +/- 7mm |



PACKAGING

| | |
|------------------------|--------------------|
| Bags per carton | 600 |
| Cartons per pallet | 20 |
| Bags per pallet | 12.000 |
| Carton dimensions (mm) | 595x355x250 |
| Pallet dimensions (mm) | 1200x1000 |
| Weight per carton (kg) | 6,4 |



€ 2,01