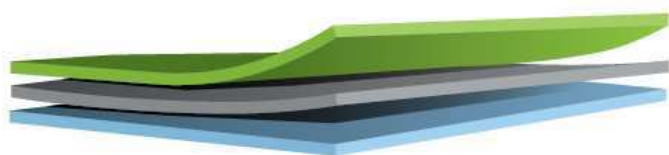


Codice	SRV.3003	Descrizione	Sacchetto 1kg caffè valvola interna
Capacità	1 kg (3.000 ml)	Proprietà tecniche del film	Saldabilità - ASTM F88-99
Materiale	PET/ALU/PE	Resistenza Saldatura (N/15 mm) >	34
Colore	BIANCO	Temperatura Saldatura °C	170
Valvola	INTERNA	Pressione Saldatura Kpa	230
		Tempo Saldatura s	1,5
		Barriera	
		Permeabilità Ossigeno	< 0,1
		ASTM D3985-95 cc/m ² /24h (23°C-0% r.h.)	
		Permeabilità vapor d'Acqua	< 0,1
		ASTM F1249-90 g/m ² /24h (38°C-90% r.h.)	

COMPOSIZIONE
Materiale


- POLYESTER

12
17

- ALUMINIUM

6,35
17

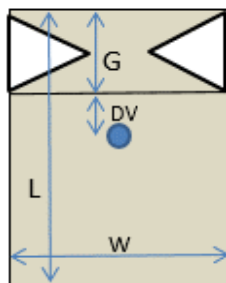
- POLYETHYLENE

90
83

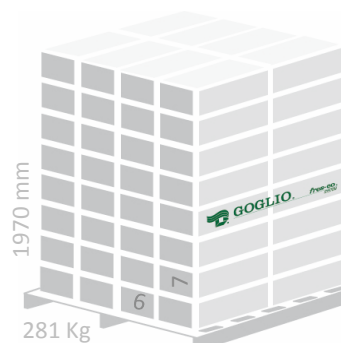
 Tolleranza : +/- 8mm
 Spessore (µm) Grammatatura (g/m²)

DIMENSIONI (mm)


Larghezza fronte (W)	130	Tolleranza	
Larghezza soffiato (G)	75		
Lunghezza (L)	420		
Distanza valvola (DV)	75	+/- 7mm	


IMBALLO

Sacchetti/scatola	225
Scatole/pallet	42
Sacchetti/pallet	9.450
Dimensioni scatola (mm)	435x410x260
Dimensioni pallet (mm)	1200x1000
Peso scatola (kg)	6,3



€ 1,97

Code	SRV.3003	Description	Coffee bag 1kg inner valve
Capacity	1 kg (3.000 ml)	Film technical properties Seal Strength - ASTM F88-99	
Material	PET/ALU/PE	Seal strength (N/15 mm) >	34
Colour	WHITE	Seal Temperature °C	170
Valve	INNER	Seal Pressure Kpa	230
		Seal Time s	1,5
		Barrier	
		Oxygen Permeability <	0,1
		Moisture Permeability <	0,1
		ASTM D3985-95 cc/m ² /24h (23C°-0% r.h.)	
		ASTM F1249-90 g/m ² /24h (38C°-90% r.h.)	

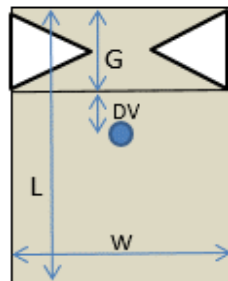
STRUCTURE

Material	Tolerance : +/- 8mm	
	Thickness (µm)	Weight (g/m ²)
- POLYESTER	12	17
- ALUMINIUM	6,35	17
- POLYETHYLENE	90	83



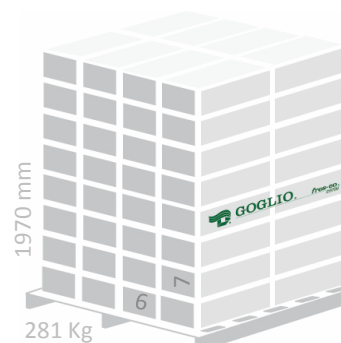
DIMENSIONS (mm)

		Tolerance
Front width (W)	130	
Gusset width (G)	75	
Length (L)	420	
Valve location (DV)	75	+/- 7mm



PACKAGING

Bags per carton	225
Cartons per pallet	42
Bags per pallet	9.450
Carton dimensions (mm)	435x410x260
Pallet dimensions (mm)	1200x1000
Weight per carton (kg)	6,3



€ 1,97