

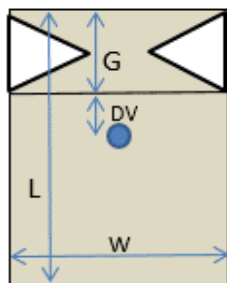
<b>Codice</b>	<b>SRV.2000</b>	<b>Descrizione</b>	<b>Sacchetto 500g caffè valvola interna</b>
<b>Capacità</b>	<b>500 g (1.500 ml)</b>	<b>Proprietà tecniche del film</b>	<b>Saldabilità - ASTM F88-99</b>
<b>Materiale</b>	<b>PET/ALU/PE</b>	Resistenza Saldatura (N/15 mm) >	<b>34</b>
<b>Colore</b>	<b>ARGENTO</b>	Temperatura Saldatura °C	<b>170</b>
<b>Valvola</b>	<b>INTERNA</b>	Pressione Saldatura Kpa	<b>230</b>
		Tempo Saldatura s	<b>1,5</b>
		<b>Barriera</b>	
		Permeabilità Ossigeno	< <b>0,1</b>
		<b>ASTM D3985-95</b> cc/m <sup>2</sup> /24h (23C°-0% r.h.)	
		Permeabilità vapor d'Acqua	< <b>0,1</b>
		<b>ASTM F1249-90</b> g/m <sup>2</sup> /24h (38C°-90% r.h.)	

**COMPOSIZIONE**

<b>Materiale</b>	Tolleranza : +/- 8mm	
	Spessore (µm)	Grammatura (g/m <sup>2</sup> )
 - POLYESTER	<b>12</b>	<b>17</b>
- ALUMINIUM	<b>6,35</b>	<b>17</b>
- POLYETHYLENE	<b>90</b>	<b>83</b>

**DIMENSIONI (mm)**


		<b>Tolleranza</b>
Larghezza fronte (W)	<b>105</b>	
Larghezza soffiato (G)	<b>65</b>	
Lunghezza (L)	<b>320</b>	
Distanza valvola (DV)	<b>75</b>	<b>+/- 7mm</b>


**IMBALLO**

Sacchetti/scatola	<b>300</b>
Scatole/pallet	<b>18</b>
Sacchetti/pallet	<b>5.400</b>
Dimensioni scatola (mm)	<b>475x355x300</b>
Dimensioni pallet (mm)	<b>1200x1000</b>
Peso scatola (kg)	<b>5,4</b>



€ 1,70

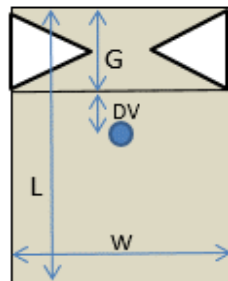
<b>Code</b>	<b>SRV.2000</b>	<b>Description</b>	<b>Coffee bag 500g inner valve</b>												
<b>Capacity</b>	<b>500 g (1.500 ml)</b>														
<b>Material</b>	<b>PET/ALU/PE</b>	<b>Film technical properties</b>													
<b>Colour</b>	<b>SILVER</b>	<b>Seal Strength - ASTM F88-99</b>													
<b>Valve</b>	<b>INNER</b>	<table border="0"> <tr> <td>Seal strength (N/15 mm) &gt;</td> <td><b>34</b></td> </tr> <tr> <td>Seal Temperature °C</td> <td><b>170</b></td> </tr> <tr> <td>Seal Pressure Kpa</td> <td><b>230</b></td> </tr> <tr> <td>Seal Time s</td> <td><b>1,5</b></td> </tr> </table>		Seal strength (N/15 mm) >	<b>34</b>	Seal Temperature °C	<b>170</b>	Seal Pressure Kpa	<b>230</b>	Seal Time s	<b>1,5</b>				
Seal strength (N/15 mm) >	<b>34</b>														
Seal Temperature °C	<b>170</b>														
Seal Pressure Kpa	<b>230</b>														
Seal Time s	<b>1,5</b>														
		<b>Barrier</b>													
		<table border="0"> <tr> <td>Oxygen Permeability</td> <td>&lt;</td> <td><b>0,1</b></td> </tr> <tr> <td><b>ASTM D3985-95</b></td> <td>cc/m<sup>2</sup>/24h (23C°-0% r.h.)</td> <td></td> </tr> <tr> <td>Moisture Permeability</td> <td>&lt;</td> <td><b>0,1</b></td> </tr> <tr> <td><b>ASTM F1249-90</b></td> <td>g/m<sup>2</sup>/24h (38C°-90% r.h.)</td> <td></td> </tr> </table>		Oxygen Permeability	<	<b>0,1</b>	<b>ASTM D3985-95</b>	cc/m <sup>2</sup> /24h (23C°-0% r.h.)		Moisture Permeability	<	<b>0,1</b>	<b>ASTM F1249-90</b>	g/m <sup>2</sup> /24h (38C°-90% r.h.)	
Oxygen Permeability	<	<b>0,1</b>													
<b>ASTM D3985-95</b>	cc/m <sup>2</sup> /24h (23C°-0% r.h.)														
Moisture Permeability	<	<b>0,1</b>													
<b>ASTM F1249-90</b>	g/m <sup>2</sup> /24h (38C°-90% r.h.)														

### STRUCTURE

<b>Material</b>		Tolerance : +/- 8mm
	Thickness (µm)	Weight (g/m <sup>2</sup> )
	- POLYESTER	<b>12</b> <b>17</b>
	- ALUMINIUM	<b>6,35</b> <b>17</b>
	- POLYETHYLENE	<b>90</b> <b>83</b>

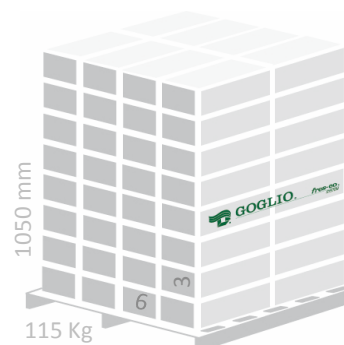
### DIMENSIONS (mm)

<b>Front width (W)</b>	<b>105</b>	<b>Tolerance</b>  <b>+/- 7mm</b>
<b>Gusset width (G)</b>	<b>65</b>	
<b>Length (L)</b>	<b>320</b>	
<b>Valve location (DV)</b>	<b>75</b>	



### PACKAGING

<b>Bags per carton</b>	<b>300</b>
<b>Cartons per pallet</b>	<b>18</b>
<b>Bags per pallet</b>	<b>5.400</b>
<b>Carton dimensions (mm)</b>	<b>475x355x300</b>
<b>Pallet dimensions (mm)</b>	<b>1200x1000</b>
<b>Weight per carton (kg)</b>	<b>5,4</b>



€ 1,70

The information contained herein is supplied in good faith and does not comprise a specification or warranty of any kind, either expressed or implied, including without limitation those of merchantability and fitness for a particular purpose.