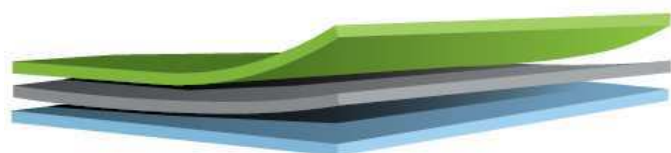


Codice	SRV.0723	Descrizione	Sacchetto 3kg caffè valvola interna
Capacità	3 kg (9.000 ml)	Proprietà tecniche del film	Saldabilità - ASTM F88-99
Materiale	PET/ALU/PE	Resistenza Saldatura (N/15 mm) >	35
Colore	ARGENTO	Temperatura Saldatura °C	170
Valvola	INTERNA	Pressione Saldatura Kpa	230
		Tempo Saldatura s	1,5
		Barriera	
		Permeabilità Ossigeno	< 0,1
		ASTM D3985-95 cc/m ² /24h (23C°-0% r.h.)	
		Permeabilità vapor d'Acqua	< 0,1
		ASTM F1249-90 g/m ² /24h (38C°-90% r.h.)	

COMPOSIZIONE
Materiale


- POLYESTER

12
17

- ALUMINIUM

6,35
17

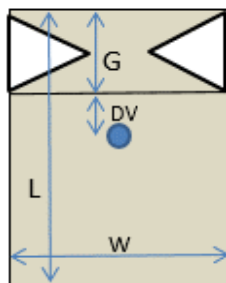
- POLYETHYLENE

100
92

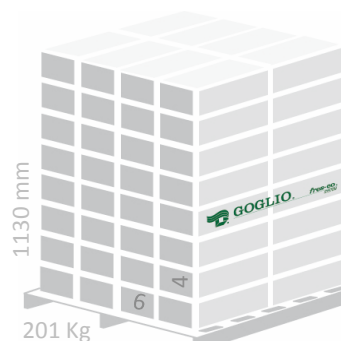
 Tolleranza : +/- 8mm
 Spessore (µm) Grammatatura (g/m²)

DIMENSIONI (mm)


Larghezza fronte (W)	250	Tolleranza	
Larghezza soffiato (G)	145		
Lunghezza (L)	400		
Distanza valvola (DV)	100	+/- 7mm	


IMBALLO

Sacchetti/scatola	150
Scatole/pallet	24
Sacchetti/pallet	3.600
Dimensioni scatola (mm)	605x315x245
Dimensioni pallet (mm)	1200x1000
Peso scatola (kg)	7,6



€ 2,48

Code	SRV.0723	Description	Coffee bag 3kg inner valve
Capacity	3 kg (9.000 ml)		
Material	PET/ALU/PE	Film technical properties	
Colour	SILVER	Seal Strength - ASTM F88-99	
Valve	INNER	Seal strength (N/15 mm) >	35
		Seal Temperature °C	170
		Seal Pressure Kpa	230
		Seal Time s	1,5
		Barrier	
		Oxygen Permeability <	0,1
		ASTM D3985-95 cc/m ² /24h (23C°-0% r.h.)	
		Moisture Permeability <	0,1
		ASTM F1249-90 g/m ² /24h (38C°-90% r.h.)	

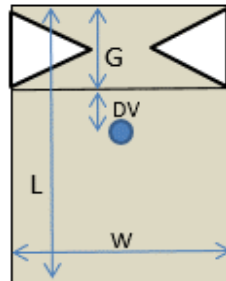
STRUCTURE

Material	Tolerance : +/- 8mm	
	Thickness (µm)	Weight (g/m ²)
- POLYESTER	12	17
- ALUMINIUM	6,35	17
- POLYETHYLENE	100	92



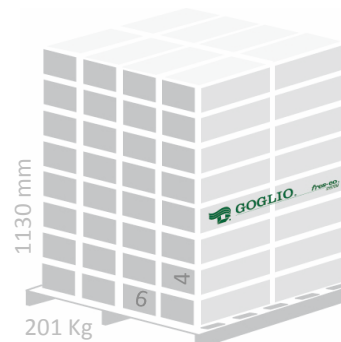
DIMENSIONS (mm)

		Tolerance
Front width (W)	250	
Gusset width (G)	145	
Length (L)	400	
Valve location (DV)	100	+/- 7mm



PACKAGING

Bags per carton	150
Cartons per pallet	24
Bags per pallet	3.600
Carton dimensions (mm)	605x315x245
Pallet dimensions (mm)	1200x1000
Weight per carton (kg)	7,6



€ 2,48